

INSISTLINE COLLECTION



INSISTLINE

FETISH
& GLAMOUR



INSISTLINE COLLECTION


INSISTLINE
com

INSISTLINE
General Distribution
LEDAPOL
Cegielniana 23, 42-700 Lubliniec
Poland
tel +48 34 356 26 32, tel +48 34 356 12 72
info@insistline.com


INSISTLINE
com

REAL SENSATION BEGINS ...

ECHTE SENSATION BEGINNT ...

ENSACI3N REAL COMIENZA ...

VÉRITABLE SENSATION COMMENCE ...

REALE SENSAZIONE COMINCIA ...



Have you ever thought what may happen when you would join two completely different kinds of materials, so fashionable in today's world?

The real SENSATION!

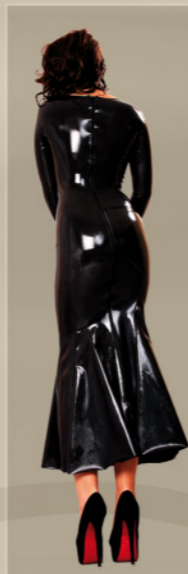
Now latex garments can be sewn in common way without expensive gluing process. What is more, seams become stronger thanks to unique DATEX's quality - it means no more customer complaints about defects!

DATEX - vulcanised latex with its resistance and amazing look in connection with very elastic knitted fabric give us unlimited and revolutionary possibilities in clothing production!

Because of the elastic fabric on the inner side, items made of DATEX put on easily without any dressing aids making the usage so comfortable and facile and let you profit from charme and look of natural latex.



9020: long dress with zipper on back



9010: dress with zipper on back



9049: long dress
9009: long mittens



9040: short dress with ornaments in front
9056: short mittens



9052: dress with collar and with zipper on back



9027: short dress with neck-strap
9009: mittens
9023: stockings with zipper on back



9054:
short dress

9013:
short dress with sleeves

www.insistline.com



9036:
short dress with collar
and zipper in front

INSISTLINE COLLECTION



9027:
short dress with neck-strap



9041: mini skirt with zipper in front
9047: top with zipper in front
9053: sleeve gloves with zipper
9063: stockings with silver zipper on side



9033:
short dress with 2 zipper



9024: frilly strings
 9003: top with zipper on back
 9053: sleeve gloves with zipper



9032: corset style top with zipper on back
 9004: mini skirt; 9029: mittens



9025: frilly skirt
 9053: sleeve gloves with zipper
 9047: top with zipper in front

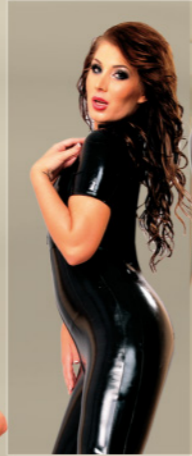


9055: decoltee catsuit with zipper in front going through crotch



9038: top
9006: trousers with zipper in front

9003: top with zipper on back
9006: trousers with zipper in front
9053: sleeve gloves with zipper



9026:
decoltee catsuit with zipper
on crotch

9058:
catsuit with zipper in front going
through crotch



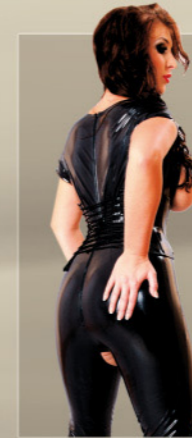
9059: short corset with fastens in front
9055: decoltee catsuit with zipper
in front going through crotch



9030: long corset with shoulder straps
9062: stockings; 9002: strings



9000: corset
9004: mini skirt



9019: open-legs catsuit without cups on breast
9059: short corset with fastens in front



9017: body with 3 zippers
9062: stockings



9050: long corset with silver zipper
9002: strings

www.insistline.com



9051: body with zipper in front



9008: short corset
9002: strings
9062: stockings



9032: corset with strap and zipper on back
9064: strings

9022: mini skirt
9061: bra with uncovered nipples
9009: long mittens



9024: frilly strings
 9039: top without cups on breast
 9053: sleeve gloves with zipper



9037: top with uncovered bust
 9031: girdle-style slips



9046: body without cups on breast
 9056: short mittens
 9023: stockings with zipper on back



9060: bikini set
9009: long mittens
9023: stockings with zipper on back



9007: open-legs body



9018: open-legs body without
cups on breast
9056: short mittens
9062: stockings



9001: bra with adjustable shoulder straps
9002: strings



9016: long corset
9022: mini skirt
9009: long mittens



9021: pony-tail mask
9008: short corset



9048: body with 3 dildos
9062: stockings



Characteristics:

Datex is brand new material made of natural caoutchouc and very extensible knitted fabric. Great extensibility and resistance is the material advantage making Datex easy to put on, what is more: WITHOUT any additional dressing aids and conditioners!

Datex makes you feel comfortable and ensures traditional latex quality at the same time.

Maintenance:

If you would like to enjoy our products for a long time, there are few suggestions about maintenance:

- wash at 40°C max.
- do not iron
- do not clean with chlorine
- do not clean chemically
- maintain with silicon-base or other non-greasy preservatives
- do not store wet or damp items
- store in airy and shady place
- materials and fabrics from another producer may stain the items, so we suggest to keep them separatly.

Usage:

In order to get glossy effect, use Insistline Glitter.

Attention:

Datex contains natural rubber latex which may cause allergies.



Ladies' size table (cm) - height 164-170 cm

Size	S	M	L	XL	XXL
Breast	80 - 87	88 - 95	96 - 103	104 - 111	112 - 118
Under the breast	63 - 69	70 - 77	78 - 85	86 - 94	95 - 104
Waist	60 - 67	68 - 75	76 - 83	84 - 91	92 - 98
Hips	84 - 91	92 - 97	98 - 104	105 - 112	113 - 120

Ladies' size table (cm) - Corsets

Size	36	38	40	42	44	46	48	50	52	54
Waist	56	61	66	71	76	81	86	91	96	101

Ladies' size table (cm) - Gloves and Mittens

Size	S	M	L	XL	XXL
wrist's girth	16	17	18	19	20
forearm's girth	24	26	28	29	30
biceps' girt	26	28	30	32	34

DATEx

REVELATION
IN LATEX
CLOTHING!



REAL SENSATION BEGINS ...

INSIDE THE PACKAGING YOU WILL FIND EVERYTHING TO SATISFY YOUR FETISH AND GLAMOUR FANSTASIES



www.insistline.com

DATEX
REVELATION
IN LATEX
CLOTHING!



INSISTLINE COLLECTION



**FETISH
& GLAMOUR**



INSISTLINE COLLECTION



PROJECT & PERFORMANCE
OF THE COLLECTION
INSISTLINE

Layout INSISTLINE
All rights reserved INSISTLINE



www.insistline.com

