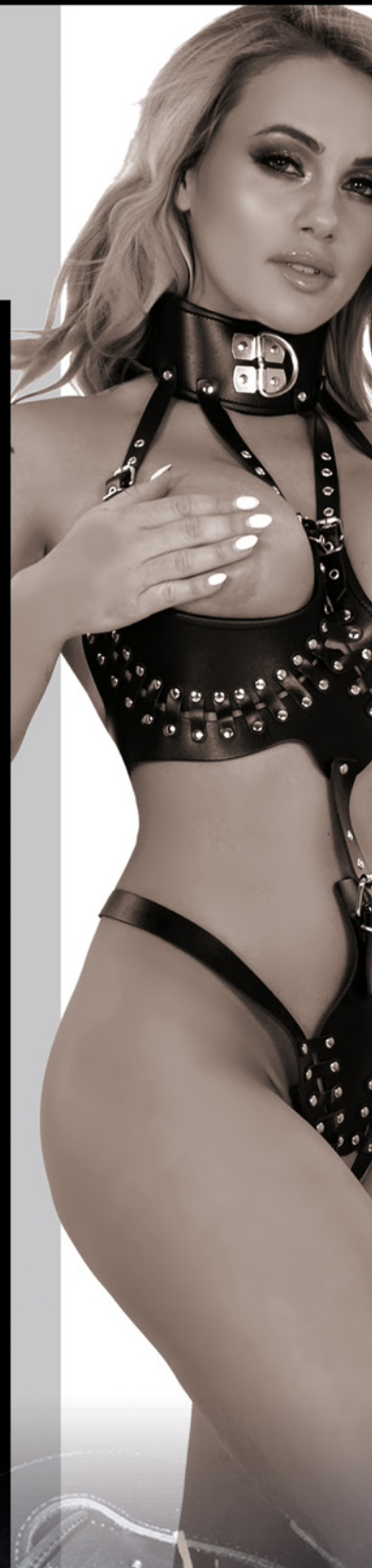
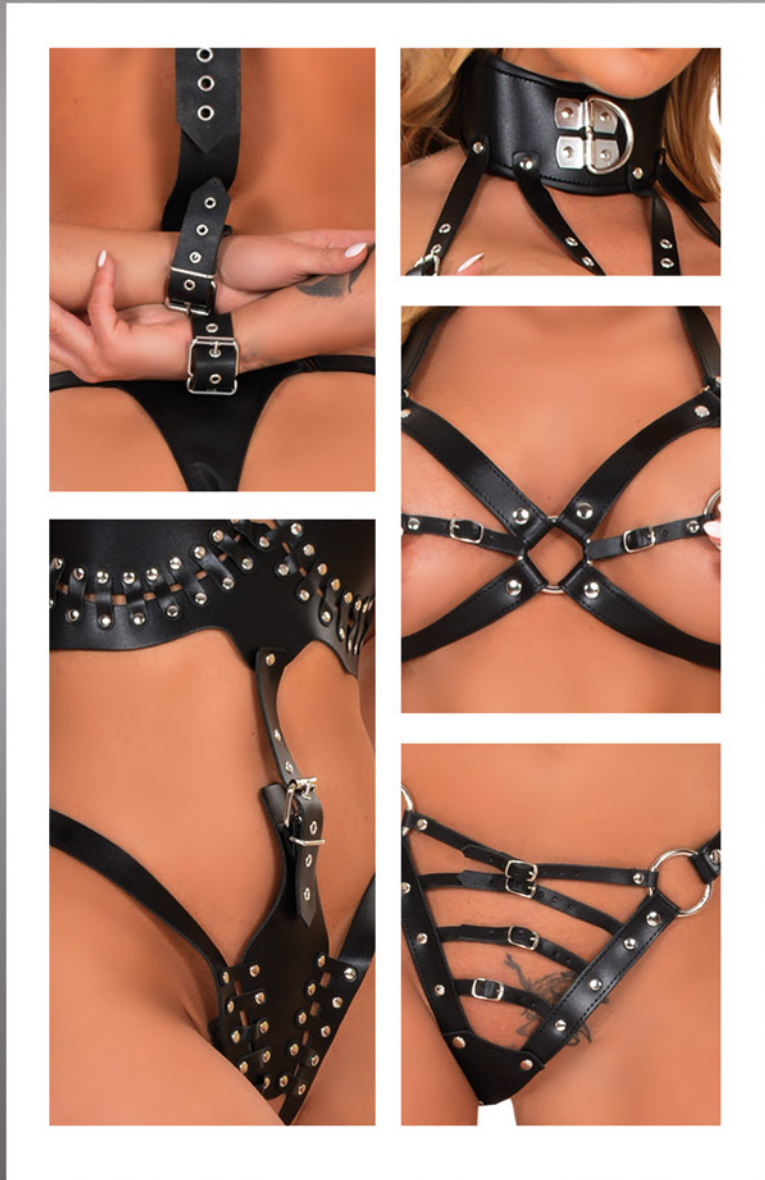
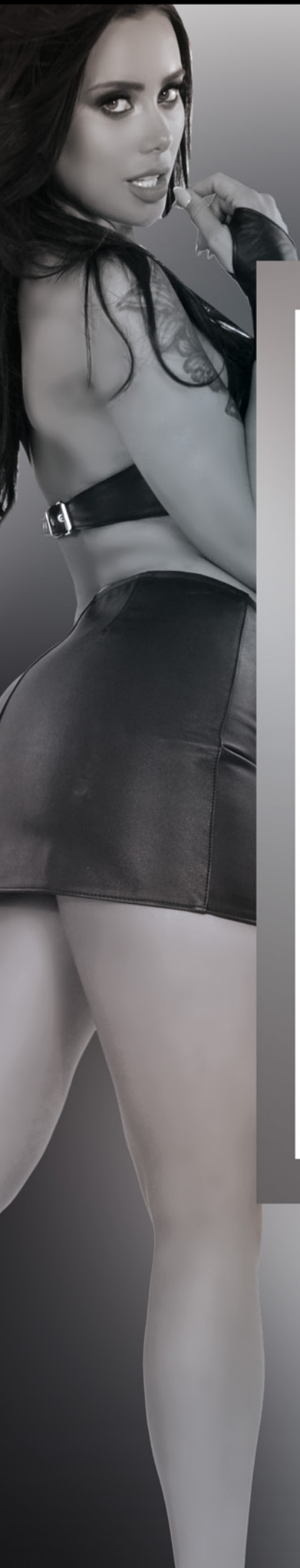




YOUR SECOND
NATURE





5507 CORSET WITH NAILHEADS
5508 SUSPENDER BELT WITH NAILHEADS
5612 CLASSIC LEATHER THONG

The combination of classic black and red colors in this corset makes it elegant and sexy at the same time. Fastened at the front with a zipper. Additionally, there is a lacing at the back. Character is added by decorative nailheads.

Suspender belt form a whole with the corset. Here also a combination of colors was used and the interesting look is added by nailheads. Belt is fastened at the back with lacing.

ATTENTION! The thongs that the model is wearing are made of **soft cowhide leather** and can be also find in our offer.

PRODUCTS ARE SOLD SEPARATELY

SIZE: S M L XL XXL

Material: SPLIT LEATHER



5078 CORSET WITH LACING
5079 SUSPENDER BELT WITH LACING

Proposition for all lovers of leather clothing. This corset resembles a top. It is laced at the front and back so that it can be perfectly adjusted to the body. There is a halterneck strap thus the corset holds better.

Suspender belt also has lacing at the front and back. The elastic straps to which you can attach stockings are adjustable. With attention to every detail, these products are finished with trim.

PRODUCTS ARE SOLD SEPARATELY

SIZE: S M L XL XXL

Material: SPLIT LEATHER



5288 BODY WITH PADDED CUPS

Sexy and feminine split leather bodysuit. The cups in this pattern are padded. The cut resembles a corset. The lacing at the front and straps at the back at the waist area will help to adjust the body to the figure and emphasize female shapes. At the bottom we have garters and thigh straps.

SIZE: S M L XL XXL

Material: SPLIT LEATHER



5277 BODY WITH LACING

Sensual body made of split leather. The lacing at the front will help adjust the product to the figure. Metal eyelets are an interesting visual asset. The neck strap, straps on the buttocks and at the waist are adjustable. Body has an open crotch.

SIZE: S M L XL XXL

Material: SPLIT LEATHER



5468 CORSET WITH NAILHEADS
5461 BRIEFS WITH NAILHEADS

This corset looks like a top. Leather belts with buckles form cups. The waist part is zippered at the front. Additionally, there is lacing on the sides. Silver nailheads are a visual addition.

The briefs are kept in the same style. The decoration here is nailheads. The straps on the hips and buttocks are adjustable.

PRODUCTS ARE SOLD SEPARATELY

SIZE: S M L XL XXL

Material: SPLIT LEATHER



5280 BODY WITH BUCKLES

Instead of the standard cups in this pattern, we have thick belts with buckles on the chest. The body part at the waist resembles a corset. It has two zippers at the front and straps with buckles at the back, which will help to make the bodysuit fit better. The collar and straps on the buttocks are also adjustable. All metal parts are anti-nickel coated so they are safe.

SIZE: S M L XL XXL

Material: SPLIT LEATHER

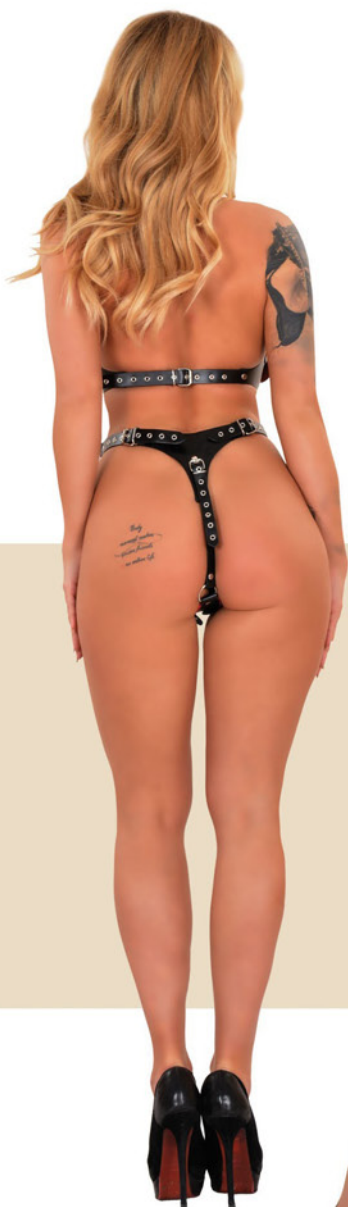


5275 BODY WITH A ZIPPER

This product has a very interesting design. Body with strong cutouts exposes the female body and will definitely add some spice to your relationship. There is zipper at the front. Multiple straps at the front and back have buckles and eyelets in an anti-nickel coating which make them adjustable.

SIZE: S M L

Material: SPLIT LEATHER



5270 BODY WITH LACING AND NAILHEADS

This body is made from thicker leather – split leather. At the front there is a lacing. Shoulder straps and the ones on the buttocks can be adjusted. There is also an adjustment using straps with buckles on the sides. Thanks to that the body will fit figure perfectly. A visual addition are decorative nailheads. All the metal parts are produce in anti-nickel coating.

SIZE: S M L XL XXL

Material: SPLIT LEATHER



0908 BODY WITH COLLAR AND NAILHEADS

Another proposition from our BDSM collection. This leather body is made from split leather. Numerous stripes with buckles and eyelets-at the shoulders, waist, buttocks - make the product easy to adjust. All the metal parts are nickel free. The cups in this body are located under the breasts, thanks to which they support and lift the bust. Wide collar has a half-ring to which you can attach a leash. Such pattern can not only serves us in bedroom it can be also combined with other clothes and dressed for a party.

SIZE: S M L XL XXL

Material: SPLIT LEATHER



5284 BODY WITH CUTOUTS

The rounded cuts in this design beautifully accent and lift the breasts. All leather straps have buckles and eyelets which make them adjustable. The metal zipper at the front is an interesting addition. The body is made of split leather which in our company is used in production of more sophisticated clothing.

SIZE: S M L XL

Material: SPLIT LEATHER



LEATHER

5490 CORSET WITH DILDOS

Another proposition for leather and BDSM lovers. The corset is fastened at the back with a zipper. Numerous leather straps and buckles—those on the sides, on the collar and on the buttocks—are adjustable. This corset is multi-functional because it has 3 dildos that are fastened with press studs so it can be quickly and easily removed. Dildos length: SMALL 12cm, BIG 17 cm All metal parts are nickel free.

SIZE: S M L

Material: SPLIT LEATHER



5102 BRA WITH NAILHEADS
5103 THONG WITH RINGS

Cowhide leather bra fastened at the back with a buckle and eyelets in anti-nickel coating. Numerous nailheads add character. Very interesting details are metal rings.

Thong has the shape of letter V. The straps on hips and in the crotch can be adjusted to the client's height. At the front there are metal rings just like the ones in bra.

PRODUCTS ARE SOLD SEPARATELY

SIZE: S M L XL XXL

Material: SPLIT LEATHER



5807 BRA WITH EDGING
5799 BRIEFS WITH BELT

This bra has a half cups which expose the bust beautifully. Strap around the neck is adjustable. The whole is fastened at the back with buckle and eyelets. Red edging adds character to the design

Briefs have regulateable straps at the front and at the buttocks. The belt at the waist is fastened with 3 straps and buckles and the back and at the front. At the sides there are additional metal rings. It can be used to attach for example cuffs. All metal parts are nickle free.

PRODUCTS ARE SOLD SEPARATELY

SIZE: S M L XL XXL

Material: SPLIT LEATHER



5807 BRA WITH EDGING
5799A BRIEFS WITH DILDO

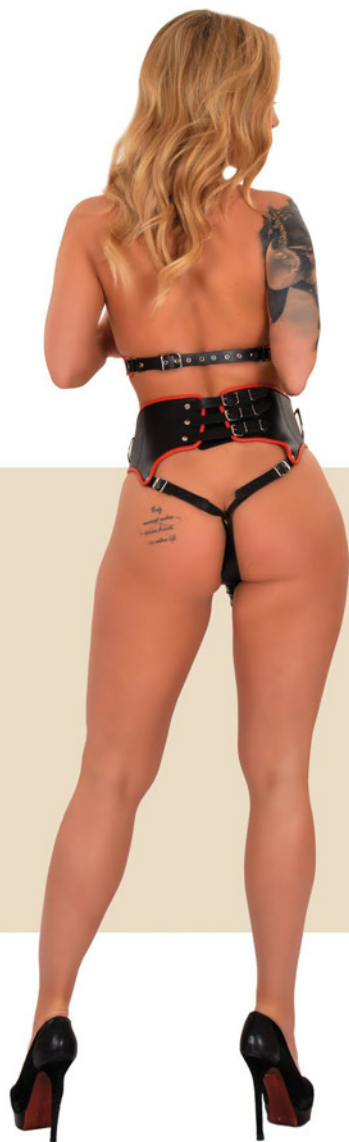
This bra has a half cups which expose the bust beautifully. Strap around the neck is adjustable. The whole is fastened at the back with buckle and eyelets. Red edging adds character to the design

Briefs have adjustable straps. The belt at the waist is fastened with 3 straps and buckles at the front and back. There are metal rings at the sides which can be use to attach for example cuffs there. At the front there is rubber dildo which is clipped with press studs. The lenght of dildo is 17cm.

PRODUCTS ARE SOLD SEPARATELY

SIZE: S M L XL XXL

Material: SPLIT LEATHER



5708 BRA WITH EDGING
5799B BRIEFS WITH TWO DILDOS

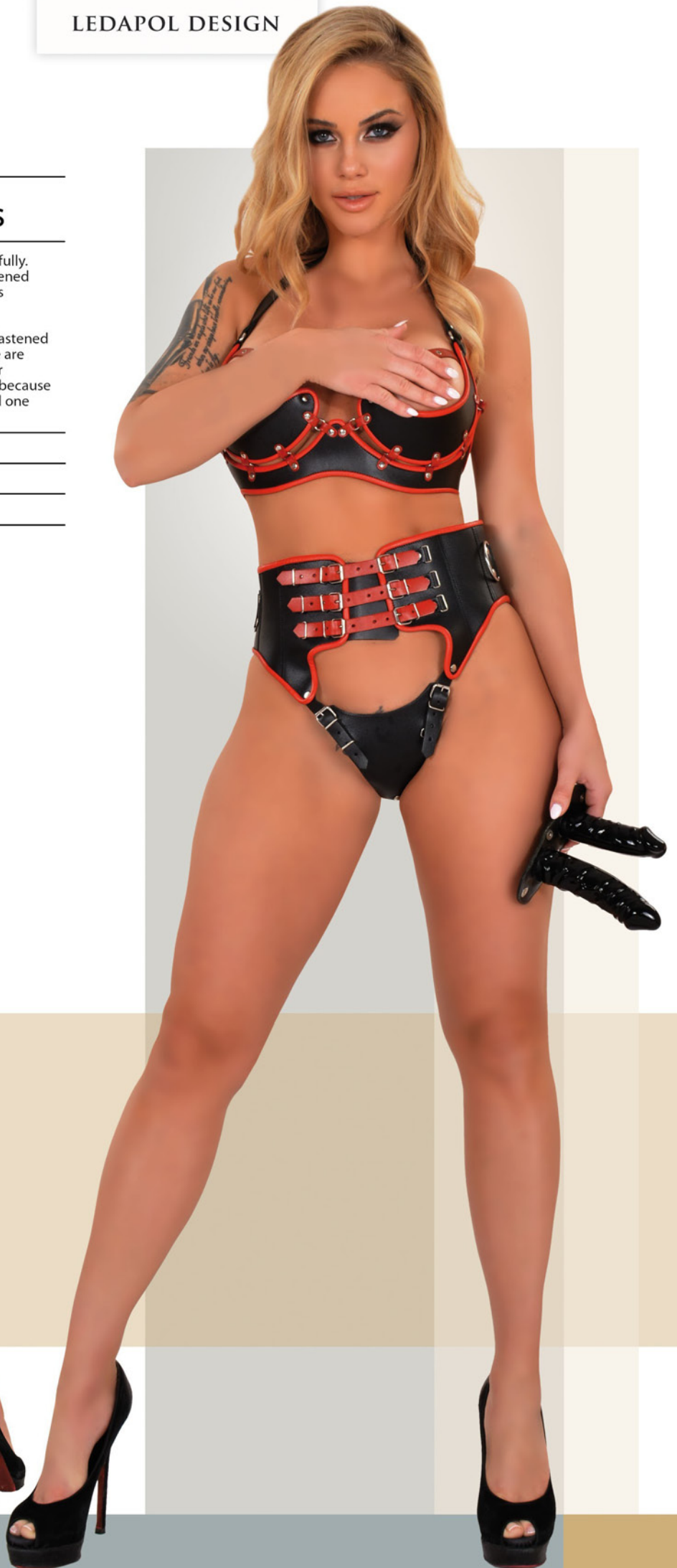
This bra has a half cups which expose the bust beautifully. Strap around the neck is adjustable. The whole is fastened at the back with buckle and eyelets. Red edging adds character to the design

Briefs have adjustable straps. The belt at the waist is fastened with 3 straps and buckles at the front and back. There are metal rings at the sides which can be use to attach for example cuffs there. This product is multi-functional because it has a clipped fragment with 2 dildos (one small and one big). The lenght of dildo is: SMALL 12 cm, BIG 17 cm

PRODUCTS ARE SOLD SEPARATELY

SIZE: S M L XL XXL

Material: SPLIT LEATHER .

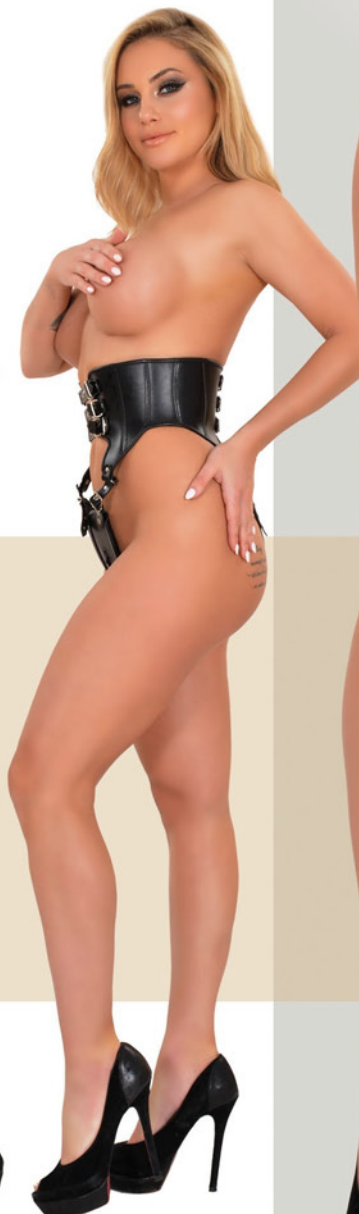


5147 BRIEFS WITH BELT

Proposal for lovers of thicker leather clothing. This briefs have adjustable straps on the front and back. There is also zipper at the crotch. The waist belt can be perfectly fitted because it has straps with buckles and eyelets at the front and back. All metal parts are made in anti-nickel coating.

SIZE: S M L XL XXL

Material: SPLIT LEATHER



0364 BODY WITH A METAL CIRCLES

Subtle and feminine leather body. Very interesting solution here is metal circles that supports the bust instead of the standard cups. All the straps have buckles and metal enforced holes in anti-nickel coating so this design will fit the figure. Attention to every detail ensures durability and comfort.

SIZE: S M L XL XXL

Material: SPLIT LEATHER

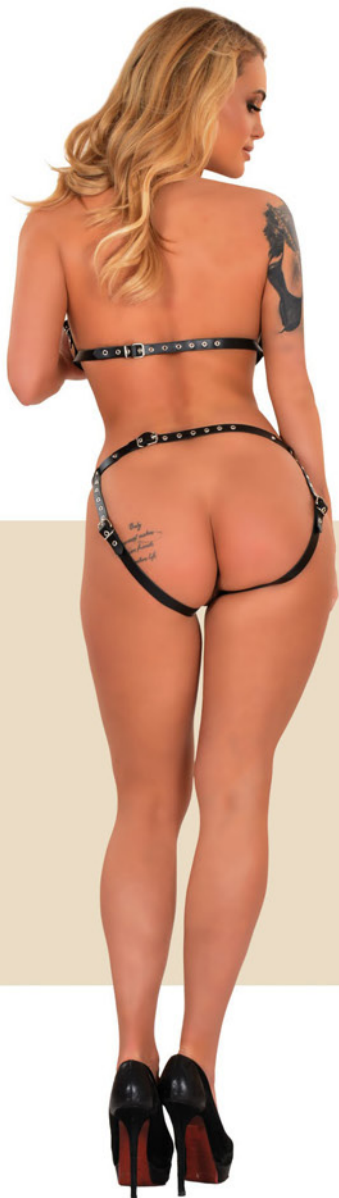


5399 BODY WITH BUCKLE

Delicate body with leather straps. Numerous buckles and eyelets facilitate adjustments. These types of products can be worn alone or combined with other types of clothing. Metal parts are safe because they are produce in anti-nickle coating.

SIZE: U

Material: SPLIT LEATHER



5220 BRA WITH EYELETS
5221 BRIEFS WITH EYELETS

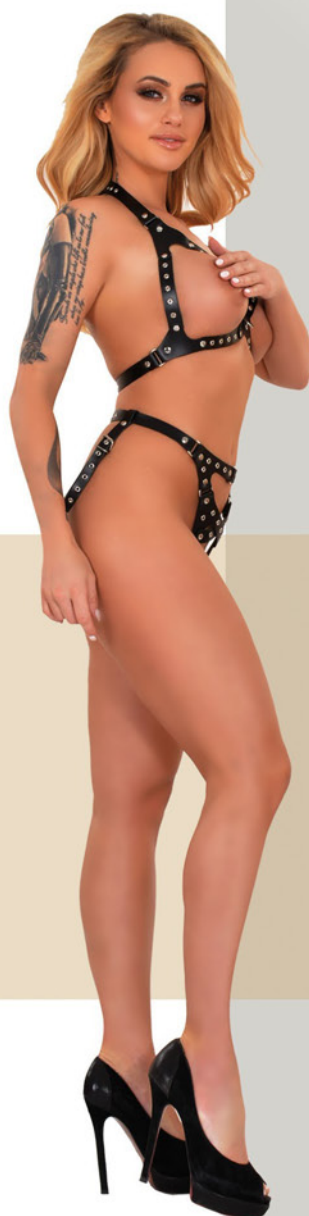
Bra with cutouts that fantastically lift and support the breasts. Fastened at the back and around the neck with a buckle. Numerous eyelets in anti-nickel coating add an interesting look.

The briefs are kept in the same style. Fastened at the back with a buckle. Additionally, the straps on the buttocks are adjustable. Metal eyelets on the front are a very interesting visual addition.

PRODUCTS ARE SOLD SEPARATELY

SIZE: S M L XL XXL

Material: SPLIT LEATHER



5604 BRA WITH METAL RINGS
5605 THONG WITH METAL RINGS

Leather clothing doesn't have to be boring. This bra reveals a lot of female body. The filling of the cup is interesting here – it is leather straps and metal rings. It is fastened at the back.

Thong has adjustable straps on the hips and a strap running through the buttocks. Thin straps and metal rings at the front are a visual advantage. Metal parts are safe because they are in nickle-free coating.

PRODUCTS ARE SOLD SEPARATELY

SIZE: S M L XL XXL

Material: SPLIT LEATHER



0116 BRA WITH METAL NAILHEADS
0117 THONG WITH CHAINS

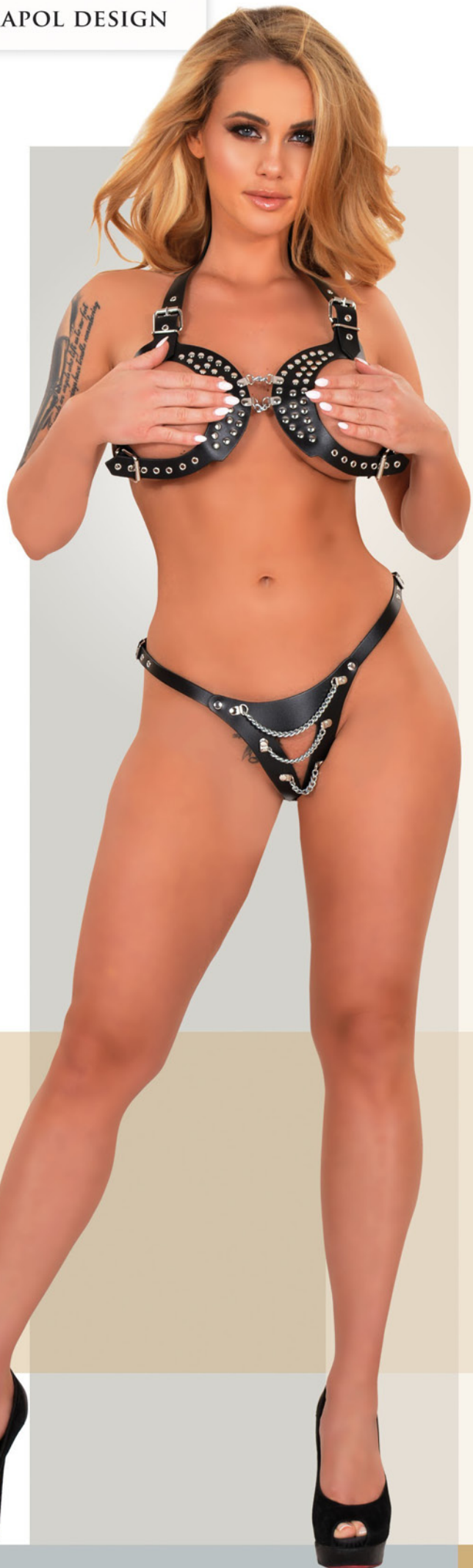
Those designs are made from split leather which in our company find application in the production of more sophisticated clothing. The bra has metal buckles on the halterneck strap and under the cups which allows it to be adjusted to the breast. Metal nailheads add style.

The thong also have buckles on the hips which ensures a good fit. In the crotch you can find a lacing. Metal chains are a visual asset and add character to the whole set.

PRODUCTS ARE SOLD SEPARATELY.

SIZE: S M L XL XXL

Material: SPLIT LEATHER



5600 BRA WITH METAL RINGS
5601 BRIEFS WITH METAL RINGS

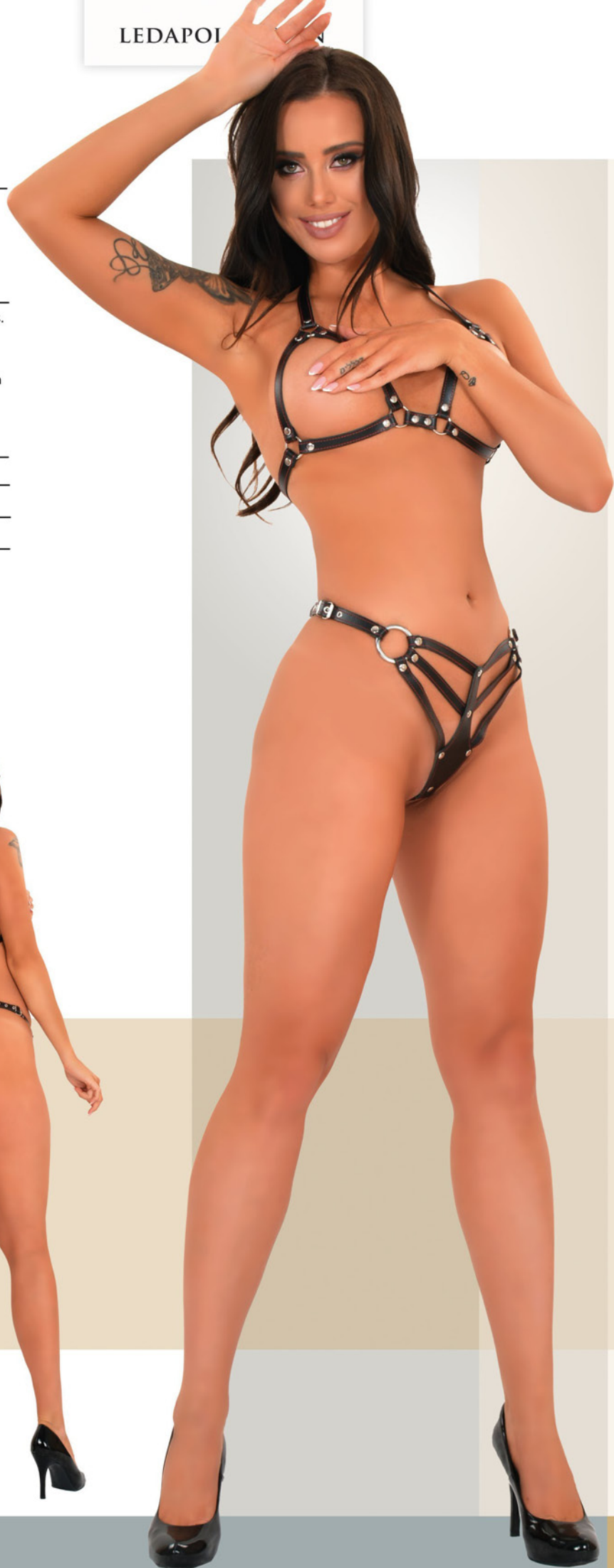
The bra consists of leather straps and metal rings. Fastened at the back with a buckle and eyelets which make it adjustable.

The briefs are made in the same style. In addition to the metal rings, red stitching also adds an interesting look. Straps on the hips and the one at the back can be adjusted. All metal parts are nickel-free.

PRODUCTS ARE SOLD SEPARATELY

SIZE: S M L XL XXL

Material: SPLIT LEATHER



5651 BRA WITH CHAINS
5653 BRIEFS WITH CHAINS

Leather bra with a twist. The bra has straps connected with a belt fastened around the neck. Instead of standard cups, we used metal chains which definitely adds character to the design.

The thongs have an adjustable strap on the hips and straps on the buttocks. Thus they can be fitted to the figure. At the front we have metal chains and metal nailheads as a decoration. All metal parts are nickel free.

PRODUCTS ARE SOLD SEPARATELY

SIZE: S M L XL XXL

Material: SPLIT LEATHER



5657 BRA WITH METAL RINGS
5658 BRIEFS WITH METAL RING

A breeze of novelty in leather lingerie. Bra with metal rings instead of standard cups. The neck strap is adjustable with a buckle and eyelets. Bra fastened at the back.

Briefs have adjustable straps on the hips and buttocks. An accessory that refers to the bra is a circle at the front.

The whole set has red stitching and accessories in red leather which add a little bit of spice.

PRODUCTS ARE SOLD SEPARATELY

SIZE: S M L XL XXL

Material: SPLIT LEATHER



0242 BRA WITH CHAINS
0243 THONG WITH CHAINS

Bra with leather neck strap and metal chains. It fits very well on the breasts.

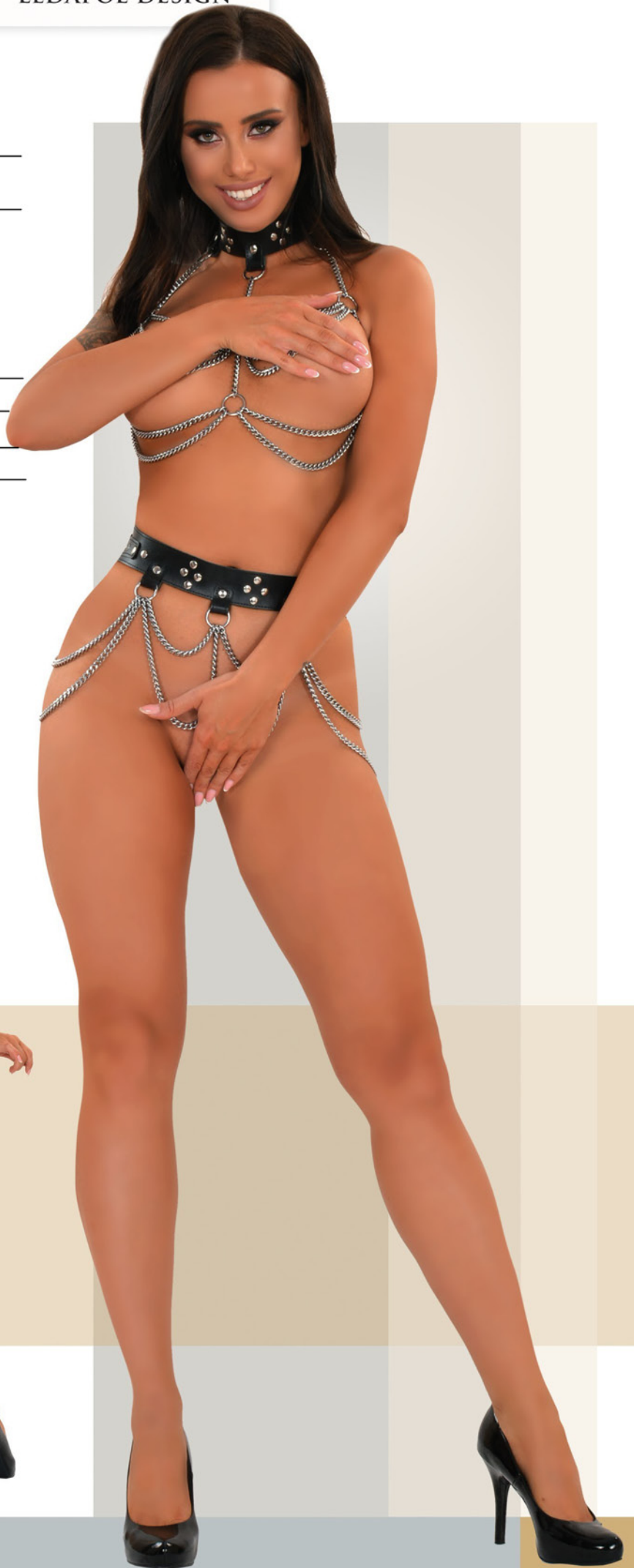
The thong consist of a leather belt at the waist and metal chains in a safe nickel-free coating that beautifully surround the hips and bottom.

Our set is finished with a metal nailheads that add an effective look to the whole. It can be used as an addition to other clothing from our collection.

PRODUCTS ARE SOLD SEPARATELY.

SIZE: S M L XL XXL

Material: SPLIT LEATHER



0502 COLLAR AND CUFFS WITH CHAIN

Precision-crafted collar and handcuffs are adjustable with buckles and metal eyelets. All metal elements are made in anti-nickel coating which makes them safe. The chain which connects collar and cuffs fits into the subject of BDSM. It is an ideal proposition for those who want to add a little spice to their relationship and surprise their partner in the bedroom.

SIZE: U

Material: SPLIT LEATHER

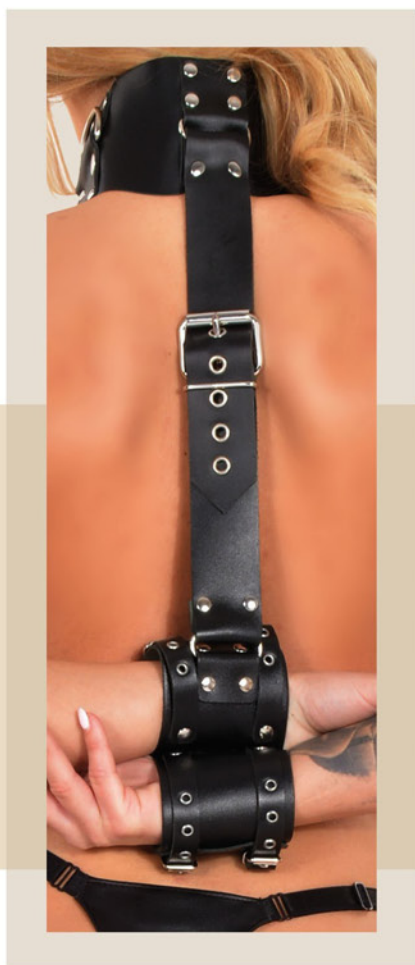


0408 COLLAR AND CUFFS ON A BELT

Another proposition for a BDSM lovers. Our bonding set is made from a stiff split leather. The collar and the cuffs are wider and finished with metal nailheads. Additionally the collar has semicircles so you can attach for example a leash there. The product has buckles and eyelets in anti-nickel coating on the neck strap, on the hand straps and on the vertical strap which holds the whole so that can be adjusted.

SIZE: U

Material: SPLIT LEATHER



0445 WAIST BELT AND HAND STRAPS
0480 STRAPS FOR HANDS AND THIGHS

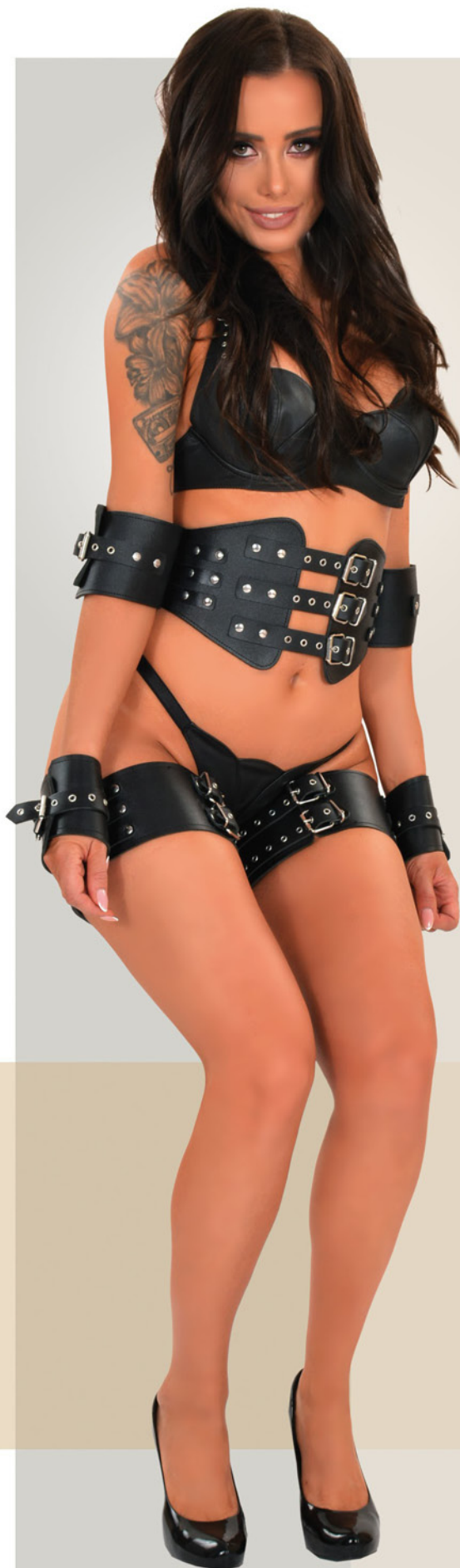
The waist belt resembles a mini corset. It is fastened with 3 buckles at the front and at the back. The hands cuffs are attached to the corset.

The wide thigh straps are combined with the wrist cuffs. The whole is finished with stitching on the edges. The designs are adjustable which ensures comfort and satisfy many cutomers.

PRODUCTS ARE SOLD SEPARATELY

WAIST BELT AND HAND STRAPS SIZE: S/M L/XL
STRAPS FOR HANDS AND THIGHS SIZE: U

Material: SPLIT LEATHER



0360 HARNESS WITH DILDOS

Bold design with a character. Leather body harness with a thicker straps connected with each other by a metal circle and chains. All metal parts are safe because they don't contain nickel. The body is made from split leather which is more stiff. It is adjustable on the shoulders, in the bust and on the hips, therefore it will meet the expectations of customers. Two dildos that are the part of this design are attached with press studs and can be easily taken off which makes the body multifunctional. The length of dildos are SMALL 12cm and BIG 17cm.

SIZE: S M L XL XXL

Material: SPLIT LEATHER

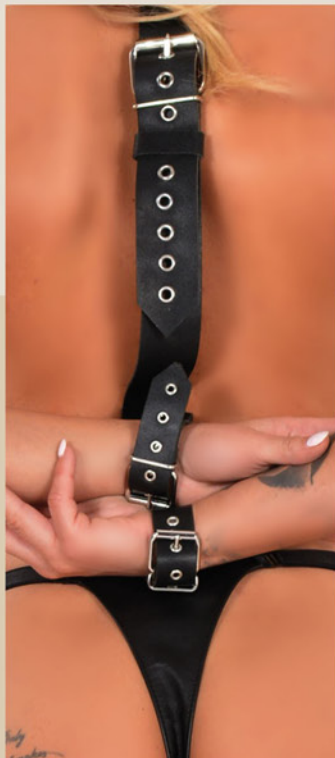
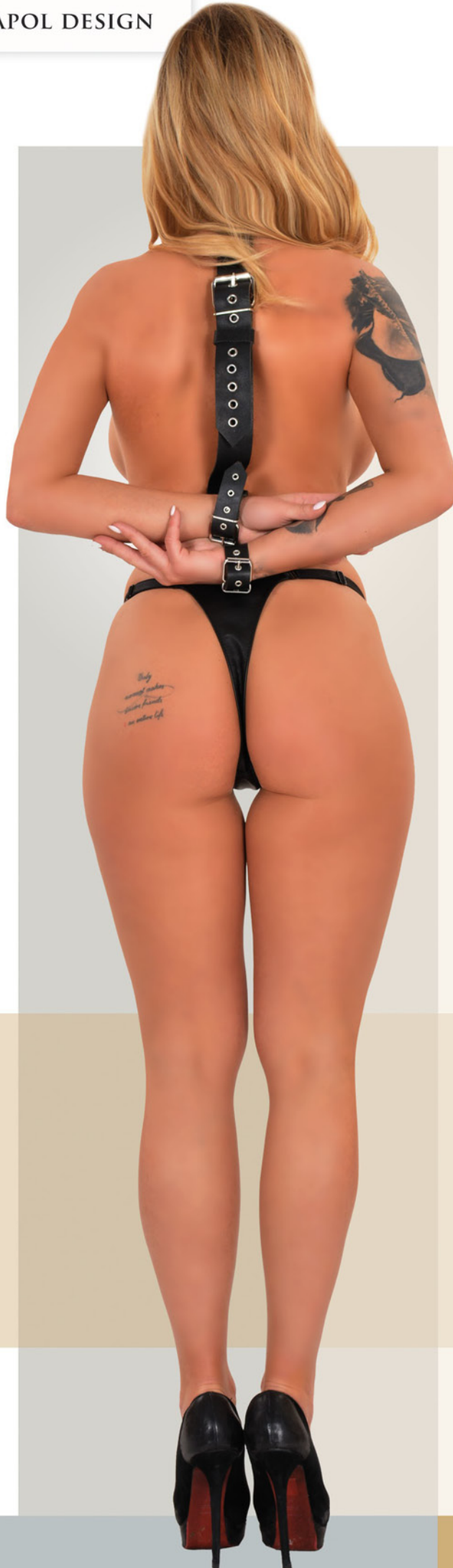
**LEATHER**

0191 LEATHER COLLAR AND CUFFS ON A BELT

For all lovers of BDSM who want to add some spice to their relationship. A sophisticated split leather design will help create the right mood. The collar and cuffs on the belt has metal buckles and eyelets in anti-nickel coating on the neck strap, on the hand straps and on the vertical strap which holds the whole so that can be adjusted to the customer's height.

SIZE: U

Material: SPLIT LEATHER

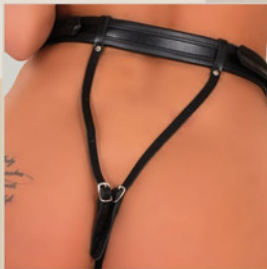


0742 BRIEFS WITH DILDO

Thong with a dildo that is fastened with press studs at the front. The straps on the hips and the thin leather straps on the buttocks have buckles and eyelets thanks to which panties can be easily adjusted to the client's figure and height. The length of rubber dildo is 17cm. All the metal parts are produced in a safe nickel-free coating.

SIZE: S M L XL XXL

Material: SPLIT LEATHER

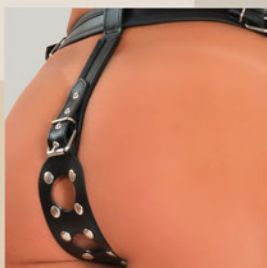
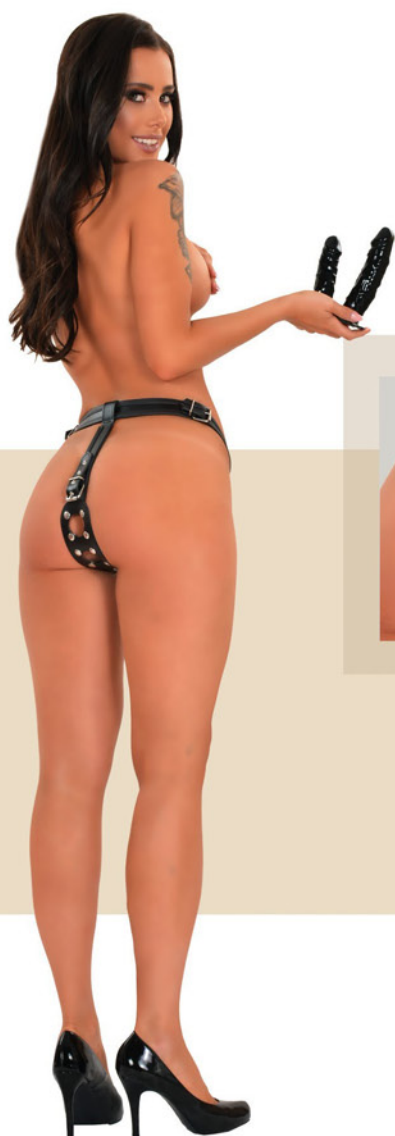


0739/1 BRIEFS WITH DILDOS

Split leather thong finished with a trim. Adjusted on the hips and buttocks thanks to straps with buckles. This product is multi-functional because it has a clipped fragment with 2 dildos (one small and one big) and another dildo (big one) which can be attached to the front. The length of the dildo : SMALL 12cm and BIG 17cm.

SIZE: S M L XL XXL

Material: SPLIT LEATHER



5462 BRIEFS WITH DILDOS

Split leather thong. Adjusted on the hips and at the back with bucklets and eyelets. This product is multifunctional because it has a clipped fragment with two dildos (one small and one big) and another dildo (big one) at the front. The length of the dildos: SMALL 12 cm, BIG 17 cm.

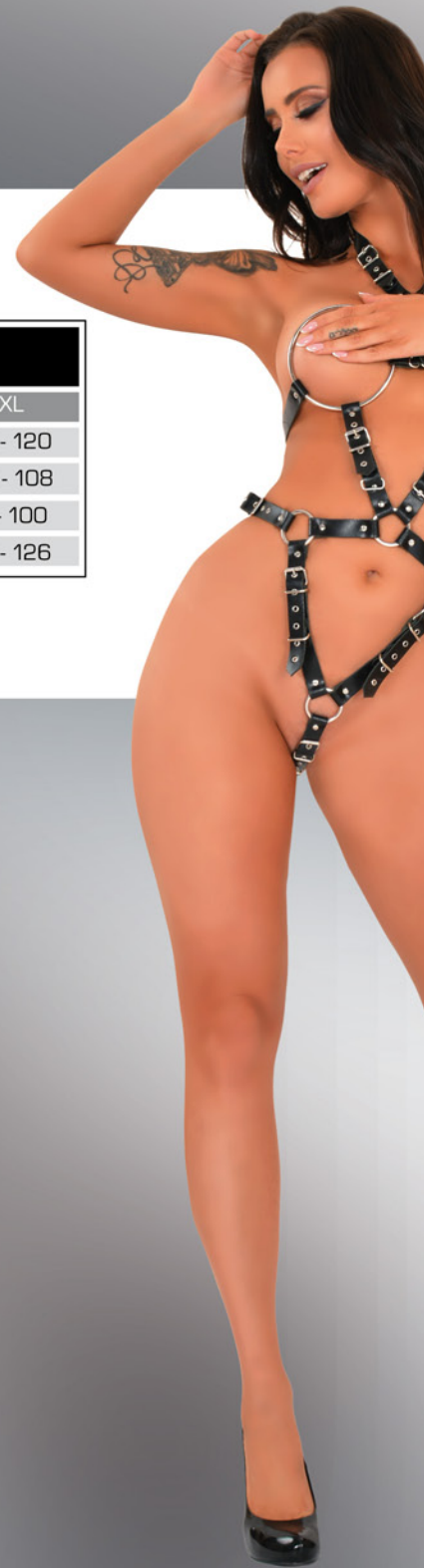
SIZE: S M L XL XXL

Material: SPLIT LEATHER





YOUR SECOND
NATURE



Split leather ladies' size table – height 164-176 (cm)					
Size	S	M	L	XL	XXL
Breast (cm)	77 - 87	87 - 97	97 - 107	107 - 117	110 - 120
Under the breast (cm)	62 - 72	72 - 82	82 - 92	92 - 102	100 - 108
Waist (cm)	59 - 69	67 - 77	77 - 87	84 - 94	92 - 100
Hips (cm)	82 - 90	90 - 98	98 - 108	108 - 118	112 - 126

36
BDSM



BDSM

36