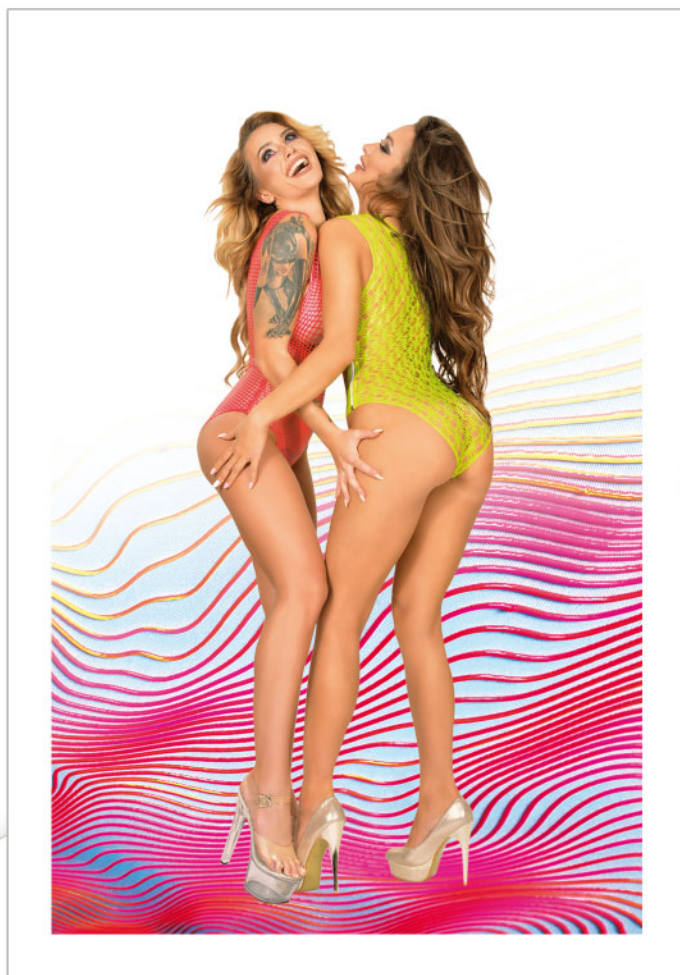




FREE DELIGHT  
DIMENSION

*Ledapel collection*



FREE DELIGHT  
DIMENSION

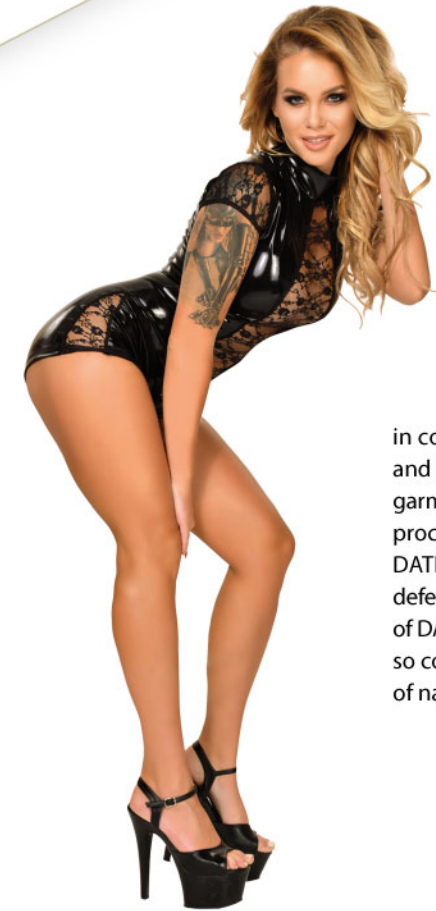
*Ledapel collection*





FREE DELIGHT  
DIMENSION

*Ledapol collection*



DATEX - natural latex with its resistance and amazing look in connection with very elastic knitted fabric give us unlimited and revolutionary possibilities in clothing production! Now latex garments can be sewn in common way without expensive gluing process. What is more, seams become stronger thanks to unique DATEX's quality - it means no more customer complaints about defects! Because of the elastic fabric on the inner side, items made of DATEX put on easily without any dressing aids making the usage so comfortable and facile and let you profit from charm and look of natural latex.

The latest technologies have made it possible to introduce PRINTED DATEX to the market. It is nothing else than latex mesh lined with a stretchy knitted fabric. In this simple way an amazing and unique designs are created. From now on an comfortable and easy to use products from datex will also be colourful and will stimulate your imagination and senses.



People who enjoy the touch of the latex on bare skin will also find something interesting in our offer. In addition to the novelties form printed datex we also have a range of PRINTED LATEX products. The main difference between these two is that printed latex is lined without using any other fabric and is very flexible. Thanks to technological innovations now our latex can take on an interesting three-dimensional forms.



AVAILABLE AT:





**2993**  
Body with the zipper  
on the side



**2992**  
Body with a round  
neckline



**2996**  
Body  
(bra combined  
with thong using  
strap on the stomach)



**2989**  
Body with V-neckline  
and tear-shaped hole  
at the front



**2991**  
Body  
with V-neckline



**2990**  
Body  
with V-neckline  
and open crotch



**2988**  
Mini dress  
with a round neckline  
and four garters



**2984**  
Flared dress  
with a round  
neckline  
and a hole under  
the bust



**2983**  
Close-fitting dress  
with a round neckline  
and a hole under  
the bust





**2986**  
Long dress  
with V-neckline



**2987**  
Flared dress  
with a round  
neckline



**2997**  
Set (fancy bra fastened  
at the front and thong  
with the hole  
at the front)  
**2994**  
Over-the-knee skirt,  
checkered pattern

**2985**  
Long dress  
slightly flared  
at the bottom  
with V-neckline

**2997**  
Set (fancy bra fastened  
at the front and thong  
with the hole at the front)



**2998**  
Set  
(bra fastened  
at the back  
and fancy thong)



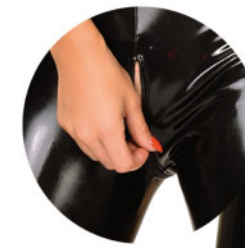
**2999**  
Set  
(bra fastened  
at the front,  
diamond pattern  
and thong with  
the hole on the front)



**2995**  
Set  
(top and thong,  
checkered pattern)



**9381**  
Short-sleeved  
blouse with tulle  
inserts at the front  
and back  
**9377**  
Trousers with tulle  
inserts at the front  
and back



**9370**  
Catsuit without  
sleeves with tulle  
neckline





**9333**  
Dress with tulle bust and skirt and corset belt



**9378**  
Long-sleeved blouse with tulle inserts in the neckline and at the back  
**9380**  
Trousers with tulle inserts on the sides



**9379**  
Blouse with tulle sleeves, back and cleavage  
**9385**  
Trousers with tulle legs



**9334**  
Long-sleeved tulle dress with datex belt and inserts



**9328**  
Dress with datex and tulle straps



**9369**  
Mini dress with tulle inserts on the sides





9335  
Mini dress  
with tulle  
sleeves  
and back



9330  
Mini dress  
with lace  
sleeves  
and front



9329  
Mini dress  
with short  
lace sleeves  
and lace front



9337  
Mini dress  
with straps  
on the bust



9338  
Mini dress  
with straps  
on the neckline  
and bust



9336  
Mini dress  
with  
stand-up  
collar  
and straps  
on the bust







**9332**  
Dress  
without  
sleeves  
with silver  
zipper

**9345**  
Dress  
with tulle  
frill and deep  
cleavage

**9344**  
Long dress  
with tulle  
on the bust



**9331**  
Body with lace  
sleeves, front  
and sides

**9372**  
Body with tulle  
straps and sides

**9340**  
Top  
with tulle  
front  
and lacing  
**9339**  
Shorts  
with tulle  
sides  
and lacing



**9340**  
Top  
with tulle  
front  
and lacing  
**9341**  
Skirt  
with tulle  
sides  
and lacing



**9342**  
Top  
with stand-up  
collar  
and silver  
zipper  
**9343**  
Shorts  
with silver  
zipper  
at the front



**9342**  
Top  
with stand-up  
collar  
and silver  
zipper  
**9368**  
Midi pencil  
skirt with silver  
zipper  
at the front



**9379**  
Blouse  
with tulle  
sleeves,  
back  
and cleavage  
**9371**  
Shorts  
with tulle  
inserts  
at the back  
and on the side



**9374**  
Bra  
with straps  
under the bust  
**9389**  
Shorts with  
well-cut back





**9374**  
Bra  
with straps  
under the bust  
**9375**  
G-string  
with strap  
around the hips  
**9376**  
Stockings  
with straps  
around the thigh



**9384**  
Body  
(bra  
and pants  
combined  
using straps)



**9382**  
Half-cup bra  
with straps  
on the bust  
**9383**  
Pants  
with straps



**9409**  
Lace body  
with cuts  
**(6111)**  
wet-look version



**9410**  
Body - bra  
and pants  
combined  
with straps  
**(6112)**  
wet-look version



**9080**  
Well-cut body  
with a hole  
at the front  
and bottom





**9407**  
Half-cup bra  
with the cuts  
on the bust  
**(6110)**  
wet-look version  
**9397**  
Mini skirt  
with the straps  
on the buttocks  
**(6102)**  
wet-look version



**9405**  
Half-cup  
bra with straps  
**(6108)**  
wet-look version  
**9396**  
Plain  
mini skirt  
**(6101)**  
wet-look version



**9407**  
Half-cup  
bra with  
the cuts  
on the bust  
**(6110)**  
wet-look version  
**9395**  
Mini skirt  
with two holes  
on the buttocks  
**(6100)**  
wet-look version



**9403**  
Short top  
with the stand-up  
collar  
**(6113)**  
wet-look version  
**9401**  
Short plain gloves  
**9402**  
Mini skirt with  
the frill  
**(6106)**  
wet-look version



**9403**  
Short top  
with the  
stand-up collar  
**(6113)**  
wet-look version  
**9404**  
Shorts  
with silver  
zipper  
at the front  
**(6107)**  
wet-look version  
**9401**  
Short plain  
gloves





**9408**  
Collar  
**(6114)**  
wet-look version  
**9406**  
Plain bra fasten  
at the back  
**(6109)**  
wet-look version  
**9110**  
Plain long gloves  
**9398**  
Well-cut shorts  
with tulle  
on the sides  
**(6103)**  
wet-look version  
**9393**  
Plain datex stockings



**1310**  
Half-cup bra  
**1506**  
Plain  
mini skirt  
**1341**  
Stockings  
with lacing  
and zipper



**9405**  
Half-cup bra  
with straps  
**(6108)**  
wet-look version  
**9394**  
Mini skirt  
with lace inserts  
**(6099)**  
wet-look version



**9272**  
Flared dress  
with tulle  
bust and skirt  
and corset belt



**9399**  
Body with heart-shaped datex on the bust and tulle inserts (6104) wet-look version



**9400**  
Long-sleeved body with tulle front, back and sides (6105) wet-look version



**9391**  
Body with tulle sides and straps on the neckline (6097) wet-look version

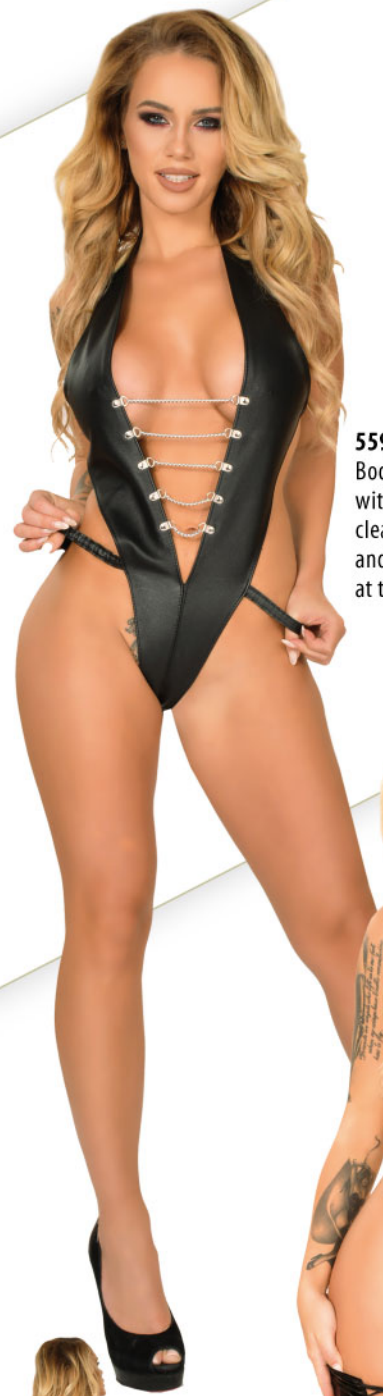


**9390**  
Well-cut body with stand-up collar (6096) wet-look version



**9392**  
Well-cut body with long sleeves and lacing at the front (6098) wet-look version





**5593**  
Body with deep cleavage and chains at the front



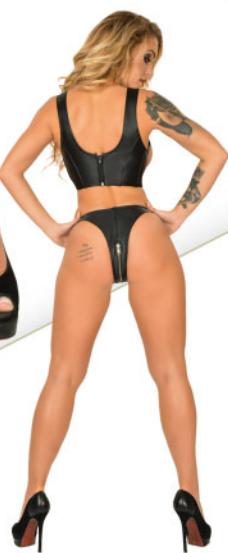
**5597**  
Half-cup bra with nailheads  
**5737**  
Garter belt  
**5044**  
T-string with rubber straps



**5596**  
Top with lacing at the front and zipper at the back  
**5590**  
Pants with zipper at the front



**1309**  
Plain bra fasten at the back  
**1628**  
Pants with open crotch  
**1333**  
Lace-up stockings with zipper



## FREE DELIGHT DIMENSION





**2101**  
Latex body  
with deep  
cleavage



**2102**  
Mini latex  
dress  
with a round  
neckline



**2105**  
Mini latex  
dress with  
a stand-up  
collar



**2106**  
Mini latex  
dress  
with a frill



**2104**  
Mini latex  
dress  
with a stand-up  
collar  
and garters



**2103**  
Mini latex  
dress  
with strap  
fastened  
around  
the neck







**1091**  
Fingerless  
long gloves  
**1117**  
Long  
dress without  
sleeves



**1479**  
Fingerless  
gloves,  
length  
to the elbow  
**1455**  
Long dress  
without  
sleeves  
with zipper  
on the left side



**1138**  
Top with  
a zipper  
at the front  
**1159**  
Plain  
trousers



**1309**  
Plain bra  
fasten  
at the back  
**1218**  
Long skirt  
with a zipper  
at the front



**1588**  
Long dress  
made  
of mesh



**1665**  
Short corset  
with zip  
and lacing  
**1683**  
Fancy bra  
fasten  
at the back  
(two-coloured)  
**1684**  
Two-coloured  
thong





**FREE DELIGHT  
DIMENSION**  
*Ledapel collection*  
**33**



Lack and wetlook ladies' size table – height 164-176 (cm)										
Size	S		M			L		XL	XXL	
	34	36	38	40	42	44	46	48	50	52
Breast (cm)	80 - 83	84 - 87	88 - 91	92 - 95	96 - 99	100 - 103	104 - 107	108 - 111	112 - 115	116 - 118
Under the breast (cm)	63 - 65	66 - 69	70 - 73	74 - 77	78 - 81	82 - 85	86 - 89	90 - 94	95 - 99	100 - 104
Waist (cm)	60 - 62	64 - 66	68 - 70	72 - 74	76 - 78	80 - 82	84 - 86	88 - 90	92 - 94	96 - 98
Hips (cm)	84 - 87	88 - 91	92 - 94	95 - 97	98 - 100	101 - 104	105 - 108	109 - 112	113 - 115	116 - 120

Datex and printed latex ladies' size table – height 164-176 (cm)					
Size	S	M	L	XL	XXL
Breast (cm)	80 - 87	88 - 95	96 - 103	104 - 111	112 - 118
Under the breast (cm)	63 - 69	70 - 77	78 - 85	86 - 94	95 - 104
Waist (cm)	60 - 67	68 - 75	76 - 83	84 - 91	92 - 98
Hips (cm)	84 - 91	92 - 97	98 - 104	105 - 112	113 - 120

Datex and printed latex ladies' size table for stockings		
Size	Calf girth	Thigh girth
S	32 cm	46 cm
M	35 cm	50 cm
L	38 cm	54 cm
XL-XXL	41 cm	58 cm

Datex ladies' gloves and mittens size table					
Size	S	M	L	XL	XXL
wrist's girth (cm)	16	17	18	19	20
forearm's girth (cm)	24	26	28	29	30
biceps' girth (cm)	26	28	30	32	34

**MATERIALS:**

- Styles 1000-1999 are made of lack (PU)
- Styles 2000-2999 are made of printed latex
- Styles 6000-6999 are made of wet-look or ecoleather
- Styles 9000-9998 are made of Datex (knitted fabric coated with latex)

**Information:**

PRINTED LATEX is made in following basic colours: black red white.  
Other colour possibilities are available under certain MOQ  
which can be discussed directly with our commercial department.

