



RETAINING FIRST FEELING




*Ledapol collection*



*Ledapol collection*



RETAINING  
FIRST FEELING



Most of us remember the feeling of very first date, very first kiss and very first sex. Later that feeling gets weaker and we are looking for every opportunity to repeat all emotions which were with us and so we move forward with our desires and we dare to do things which we have never done before.

That is why we created new collection which will help in retaining the first feeling of sensual excitement and happiness. Now it is time to play...

Tomasz Wilk  
Ledapol's sales and marketing manager

32

Military Style



**9301**  
Long-sleeved shirt  
**9300**  
Breeches with zipper  
in front



**9197**  
Military cap  
**9308**  
Long sleeved  
shirt with  
fastens  
in front  
**9309**  
Leggins



**9291**  
Long sleeved shirt  
with 3 fastens in front  
**9292**  
Over-the-knee skirt

Military Style



9197  
Military cap  
9287  
Long sleeved shirt  
9288  
Over-the-knee skirt



9197  
Military cap  
9056  
Short mittens  
9295  
Military style top  
9284  
Shorts



9316  
Harness  
9293  
Top with zipper in front  
9294  
Shorts with legs



Military Style



9197  
Military cap with chain  
9285  
Long shirt with legs included



9197  
Military cap  
9307  
Military shirt  
9305  
Over-the-knee skirt



9302  
Military cap  
9297  
Military shirt  
9299  
Mini skirt



Military Style



**9290**  
Knee-long dress  
with zipper



**9306**  
Long-sleeved shirt  
with buttons  
**9305**  
Knee-long pencil skirt



**9198**  
Military cap  
**9283**  
Long-sleeved shirt  
with zipper  
**9282**  
Knee-long skirt  
with zipper on the back



Military Style



**9280**  
Mini dress with open  
shoulders



**9315**  
Belt with  
over-the-shoulder  
-strap  
**9293**  
Sleeveless shirt  
with zipper  
on the back  
**9294**  
Shorts with leg  
extensions



**9197**  
Military cap with chain  
**9286**  
Long-sleeved shirt  
with two belts  
**9289**  
Mini skirt



Roleplay



9297  
Long-sleeved shirt with two belts  
9298  
Knee-long skirt



9314  
Body with tulle  
and straps



9281  
Long-sleeved dress with snaps



Roleplay



3269  
Maid outfit



6051  
Long dress



1872  
Maid mini dress



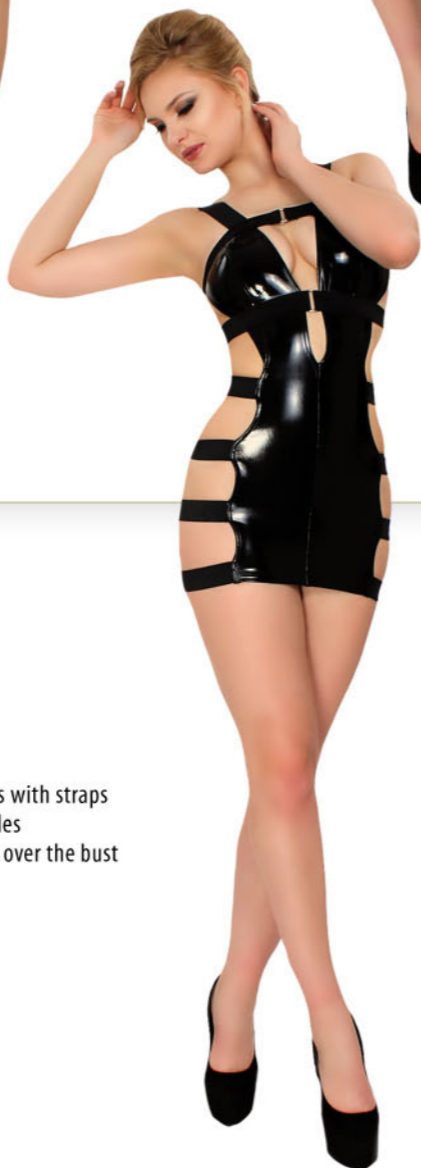
Move your body



**6052**  
Mini dress with straps  
on the sides



**6054**  
Body with straps  
on the sides  
and deep cleavage



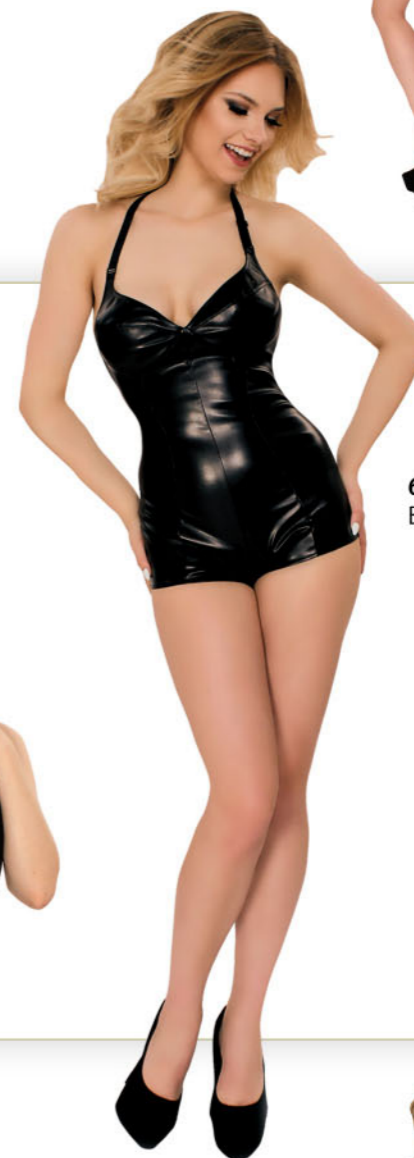
**9274**  
Mini dress with straps  
on the sides  
and strap over the bust



Move your body



**6053**  
Body with straps  
on the sides  
and strap behind  
the neck



**6050**  
Body



**9266**  
Body with lace  
in the middle



Move your body



1876  
Corset with lacing  
on the back



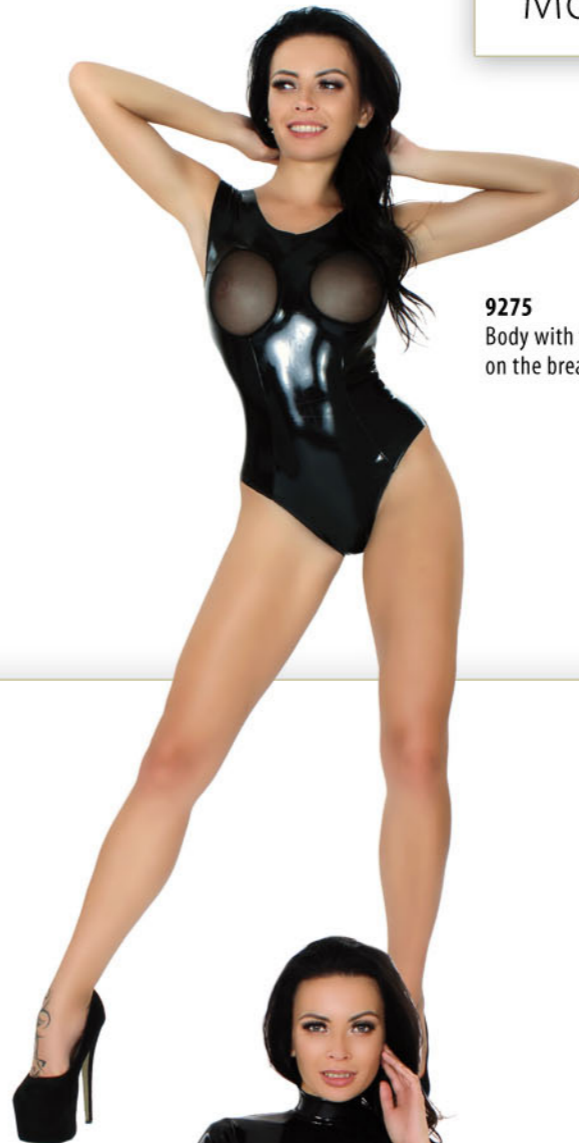
9304  
Body with  
high collar



9269  
Sexy corset with zipper



Move your body



9275  
Body with tulle  
on the breasts



6049  
Corset  
with lacing  
on the back



9276  
Sexy body  
with open cups





Move your body



9108  
Sexy Corset



9260  
Body with open  
crotch and cups



6041  
Body with open crotch and cups



Move your body



9278  
Body with short sleeves



6021  
Corset  
with open cups



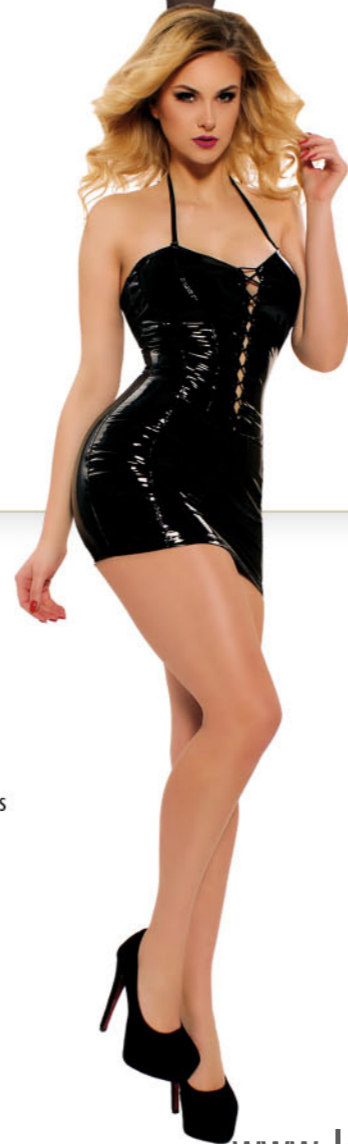
6020  
Sexy corset with lacing  
on the front



Dress code



**1873**  
Mini dress  
with shoulder  
straps



**1875**  
Mini dress



**9303**  
Sexy dress  
with removable  
front



Dress code



**9277**  
Mini dress with lace



**9279**  
Mini dress  
with zippers  
in the sides



**1877**  
Corset  
with tulle  
mini skirt



Dress code



**9311**  
Top with zipper  
on the back  
**9312**  
Short high-waisted  
skirt



**9311**  
Top with zipper  
on the back  
**9313**  
Over-the-knee  
high-waisted  
skirt



**9248**  
Mini dress  
with flounce



Dress code



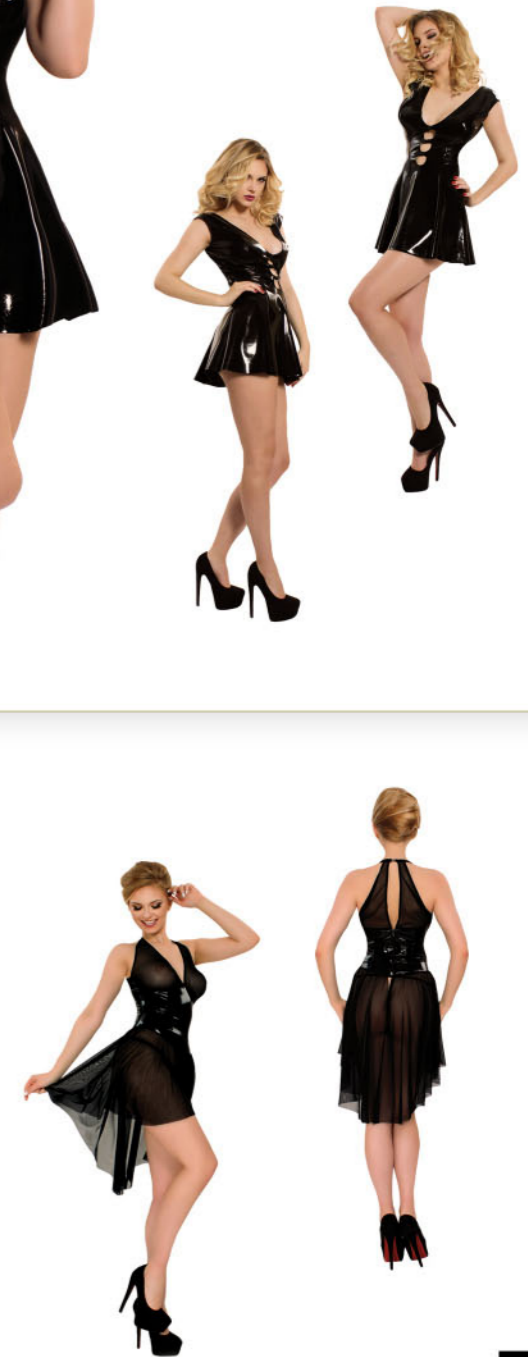
**9296**  
Mini dress with open  
shoulders



**9249**  
Mini dress  
with three sexy  
cut-outs  
on the front



**9272**  
Elegant dress  
with tulle



Dress code



**9251**  
Overall with long sleeves



**9310**  
Overall with zipper on the crotch on the back



**9252** Scarf  
**9245** Short mittens  
**9241** Short corset  
**9113** Overall with long sleeves  
**9246** Socks (half-calf length)



Show off



**9271** Garter belt  
**9190** T-strings



**9162** Bra  
**1880** Thongs



**1879** Thongs with chain



# COMING SOON



# COMING SOON





Lack and ecoleather ladies' size table – height 164-176 (cm)											
Size	S		M			L		XL		XXL	
	34	36	38	40	42	44	46	48	50	52	
Breast (cm)	80-83	84-87	88-91	92-95	96-99	100-103	104-107	108-111	112-115	116-118	
Under the breast (cm)	63-65	66-69	70-73	74-77	78-81	82-85	86-89	90-94	95-99	100-104	
Waist (cm)	60-62	64-66	68-70	72-74	76-78	80-82	84-86	88-90	92-94	96-98	
Hips (cm)	84-87	88-91	92-94	95-97	98-100	101-104	105-108	109-112	113-115	116-120	

Datex ladies' size table – height 164-176 (cm)					
Size	S	M	L	XL	XXL
Breast (cm)	80-87	88-95	96-103	104-111	112-118
Under the breast (cm)	63-69	70-77	78-85	86-94	95-104
Waist (cm)	60-67	68-75	76-83	84-91	92-98
Hips (cm)	84-91	92-97	98-104	105-112	113-120

Datex ladies' size table for stockings		
Size	Calf girth	Thigh girth
S	32 cm	46 cm
M	35 cm	50 cm
L	38 cm	54 cm
XL-XXL	41 cm	58 cm

Datex ladies' gloves and mittens size table					
Size	S	M	L	XL	XXL
wrist's girth (cm)	16	17	18	19	20
forearm's girth (cm)	24	26	28	29	30
biceps' girth (cm)	26	28	30	32	34

Datex caps size table			
Size	S	M	L
Head girth	54-58	56-60	58-62

**MATERIALS:**

- Styles 1000-1999 are made of lack (PU)
- Styles 3000-3999 are made of textile fabric
- Styles 6000-6999 are made of wet-look or ecoleather
- Styles 9000-9998 are made of Datex (knitted fabric coated with latex)



*Ledapol collection*